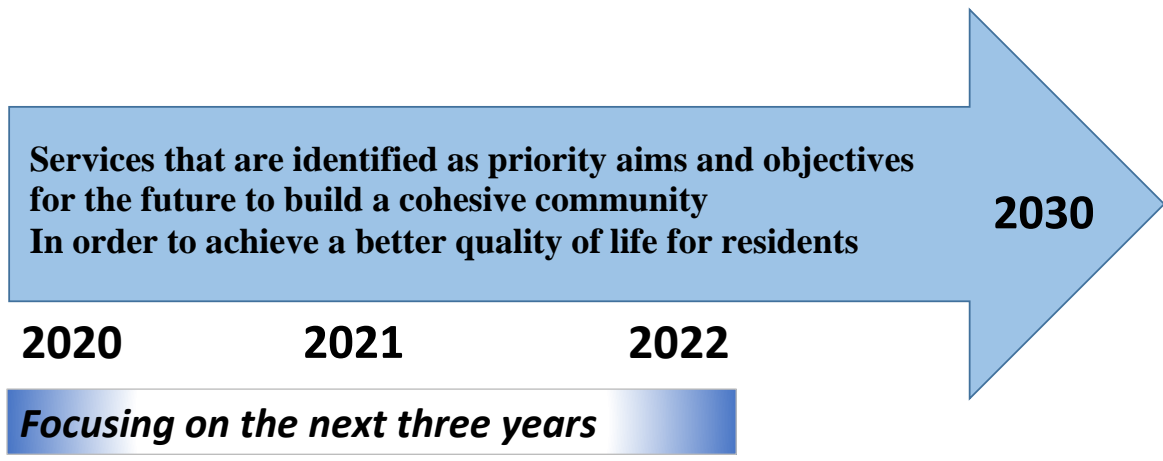
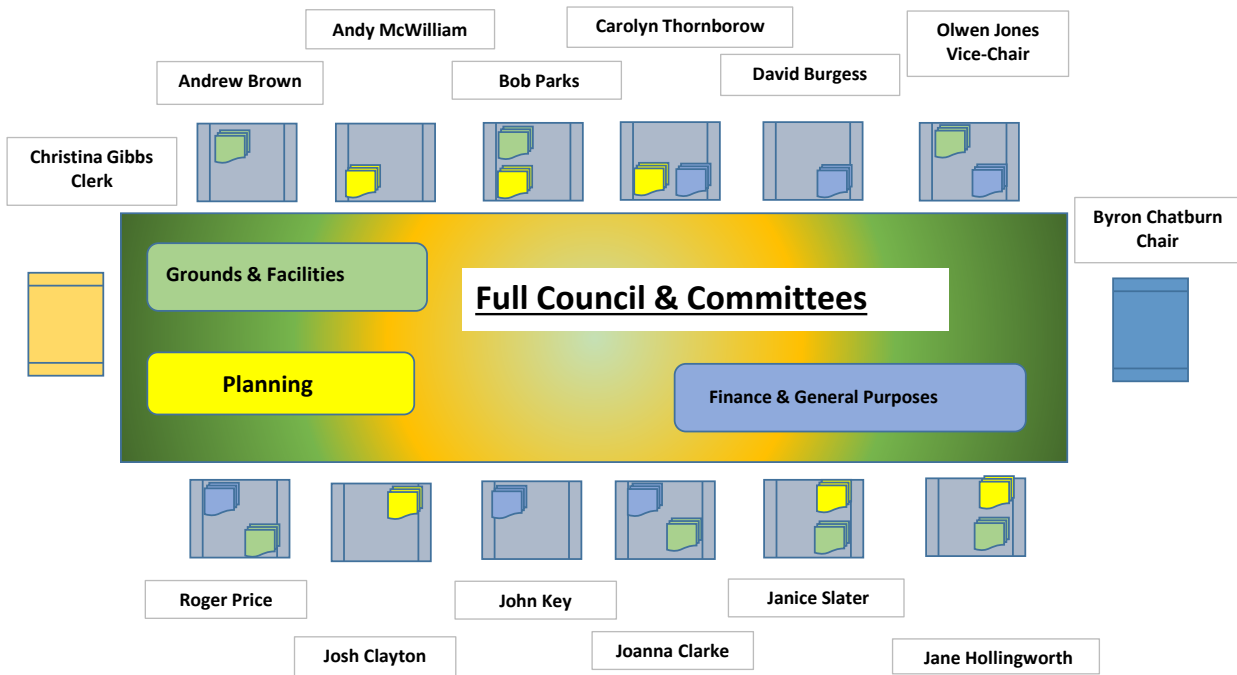




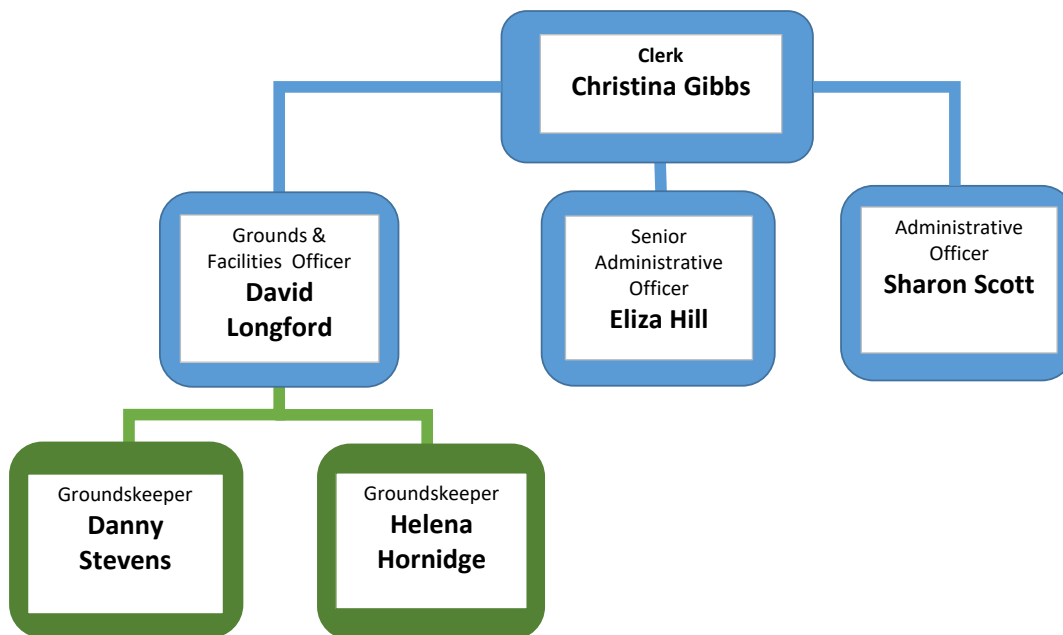
To give local residents, councillors and officers a clear understanding of what the council is trying to achieve and how it intends to deliver its aims and objectives



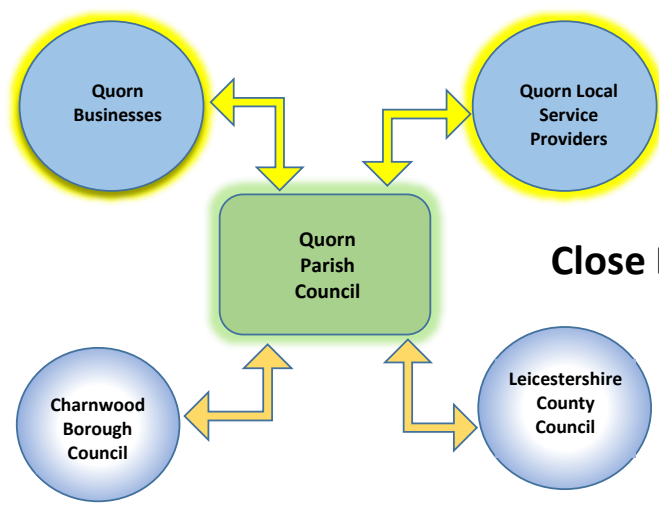
Parish Councillors & Clerk



Council Staff



The Clerk and other staff can be found at the Old School Offices on School Lane



Close Links &

Governance & Management

Progress to obtaining NALC Quality Gold Award by 2025
 Develop PC Financial Management Plans to assist Decisions
 Develop Local PC Staff capabilities
 Identify Community Areas which allow Volunteers to assist the Parish Council
 Compile Checks to ensure Local Government Compliance at all times

Council Assets

Develop Systems & Risk Reviews to ensure that the Parish Assets stay as an asset
 Pull together asset documentation into a file system to assist future generations
 Identify Changing Needs of the Village Community to understand where the PC can assist
 Ensure that the PC open spaces are maintained for the use of the whole community
 Assist in the development of Community Activities and Projects that have been requested by groups within the parish

Partnerships & Economy

Establish a dialogue with local businesses to ensure the Village prospers
 Assist Local Volunteer Groups to attain their goals
 Link with other local councils and Gov Bodies to ensure best practice
 In addition investigate any wins for parishes in partnering together
 Investigate grants being available for good causes within the community

Environment & Place

Constantly review all actions to ensure that they do not adversely affect the local Environment
 Link with local volunteers involved in the Stafford Orchard Advisory Group, other horticulture and planting activities to ensure that the grounds are well maintained.

Representation

Consult with, listen to and learn from the residents of the Parish of Quorn. Use a variety of methods of communication to ensure inclusiveness for all residents.
 Consult with and respond to consultation by local authorities and representative organisations.

**Health & Wellbeing
 Community Resilience Plan**

Combine with Local NHS Representatives and Social Care representatives to develop Strategies to assist all parts of the local Community
 Develop Detailed Local Resilience Plan linked to the UK wide Plan